

# THE FRIENDS OF ALGONQUIN PARK

Newsletter ~ No. 24 ~ 2009

The Friends of Algonquin Park is a registered non-profit charitable organization established in 1983 to enhance the educational and interpretive programs in Algonquin Park. This mandate is implemented by a dedicated staff and volunteer Board of Directors.

The Friends has had many successes over the last twenty-six years with a few of the highlights including the

development and printing of Park-related publications, construction and maintenance of interpretive walking trails, the establishment and delivery of Group Education programs, and building and funding the exhibits at the Visitor Centre and Logging Museum. The Friends has been able to fund these and many other Park projects through support received from private donations, bequests, government grants, memberships, partnerships, various fundraising efforts, and proceeds from sales online at [www.algonquinpark.on.ca](http://www.algonquinpark.on.ca), as well as through our two bookstores in the Park.

We hope you will enjoy these highlights from 2008 while looking forward to 2009.



The Friends of Algonquin Park Staff, 2009.

*Enhancing the educational and interpretive programs in Algonquin Park*

To learn more about  
The Friends of Algonquin Park visit



[WWW.ALGONQUINPARK.ON.CA](http://WWW.ALGONQUINPARK.ON.CA)

Some of our prize winners from 2008, clockwise starting at top centre: Sarah, age 4 (Junior Canoe Ranger Prize Pack); 25th Anniversary Raffle prize winners: Duncan Chisholm (2nd Prize ~ Swift Canoe Package); the 5 lucky couples who enjoyed the grand prize at The Couples Resort; Steve & Melissa Cowan (7th Prize ~ Guided Fishing Trip Package); Joe Howe (3rd Prize ~ Langford Canoe Package); Kathy Webb & husband (1st Prize ~ The Couples Resort Prize)



**25TH ANNIVERSARY RAFFLE**

A special thanks  
to all the sponsors



## • THE 25TH ANNIVERSARY RAFFLE

The 25<sup>th</sup> Anniversary Raffle was a huge success for The Friends. Tickets sold for the 15 fantastic prize packages



Drawing the winning ticket for the 25th Anniversary Raffle.

generated over \$27,500! A sincere thank you to all of our generous sponsors, enthusiastic ticket sellers and to all of you who bought tickets in support of The Friends of Algonquin Park.

There will be another raffle for 2009, and having already secured a canoe from Langford Canoe & Kayak as well as many other prizes from our generous sponsors, it promises to be another great raffle. Stay tuned!

2008

## • 100TH PUBLIC WOLF HOWL

The 100th Public Wolf Howl was held on August 7, 2008. To commemorate this Park milestone, The Friends of Algonquin Park had bumper stickers created and each vehicle that came on that Howl was given one. The Friends were proud to be part of this historic event!



## The Cache Lake Historic Site

The Cache Lake Historic Site Exhibit is well worth a visit if you have not done so yet. The historical importance of the Cache Lake site is now communicated through five exhibit panels focusing on: the Algonquin Park Station and the Ottawa, Arnprior, Parry Sound (OAPS) Railway; the



FOA Chairman, Don Spring shakes hands with Park Superintendent, John Winters as they unveil one of five new exhibit panels at the new Cache Lake Historic Site.



Representatives from some of the major sponsors: Gordon Waugh (families of Marg Waugh and Doug and Jim Farmer), Barbara Rigby (Sharpe, Standerwick, McCallum and Brown families), Patrick Hodgson (Patrick Hodgson Family Foundation), and Kim and Marilyn Smith (Bartlett Lodge and Camp Tanamakoon) at the Grand Opening of the Cache Lake Historic Site.

old Park Headquarters; Highland Inn and their visitors; the leasehold cottages and children's camps on the lake; and the significance of Cache Lake to Algonquin Park. The Friends of Algonquin Park fundraised to make this exhibit possible and in conjunction with Ontario Parks, and five other major sponsors (Cache Lake Leaseholders'

Association, the Patrick Hodgson Family Foundation, Bartlett Lodge and Camp Tanamakoon, the Families of Marg Waugh and Doug & Jim Farmer, and the Sharpe, Standerwick, McCallum and Brown Families), it was opened in August of 2008. Now you can go directly to the steps that once led to the historic Highland Inn and learn more about this interesting location.



Park Superintendent, John Winters, drives the final golden spike into the section of new rail at the Cache Lake Historic Site.

## • PARK HISTORIAN RECEIVES DIRECTORS AWARD

On Saturday, June 14, 2008, The Board of Directors of The Friends of Algonquin Park bestowed their greatest honour on Roderick MacKay. Rory is a life-long naturalist and historian of Algonquin Park and surrounding area.



Rory MacKay with his 2008 Directors Award.

Rory has spent as much time as possible in Algonquin since 1950. He has worked as a Park Naturalist and Archivist, conducted oral histories and research and written numerous books, articles and reports. Rory's archaeological investigations in the Park have proven invaluable. He helped design the Blacksmith Shop at the Algonquin Logging Museum and donated many of the tools himself. Rory continues to be an interpreter at Loggers Day and operates the forge for that popular event.

As a retired high school teacher, Rory divides his time between Gananoque and his family cottage on Lake of Two Rivers, and remains very active in the education of visitors to Algonquin Park.

Rory MacKay has been an important contributor to natural heritage education in Algonquin Park for more than 30 years. That is why the Board chose Rory to receive their Directors Award, in honour of his outstanding contributions toward the appreciation of Algonquin Provincial Park.

## • ADOPT – A – TRAIL

In 2008, eighteen interpretive trails were 'adopted' by individuals or groups for the summer. Volunteers walk their trail weekly, picking up litter and reporting any serious repair work best looked after by our professional trail crew. A plaque at the entrance of each 'adopted' trail acknowledges these contributions, and we are grateful to these caring and passionate volunteers for their dedication.

**Whiskey Rapids** ~ Stephanie Allen & Jason Dwyer

**Hardwood Lookout** ~ Jan Richmond

**Mizzy Lake** ~ Hugh McPherson

**Peck Lake** ~ Shannon Queen & Lee Earl

**Track & Tower**

~ Dan Strickland & Madeleine Pageot

**Hemlock Bluff** ~ Chris & Barb Zeagman

**Bat Lake & Two Rivers** ~ Huntsville Nature Club

**Centennial Ridges** ~ Tom Newman

**Lookout** ~ Bernadette & Gord Nugent

**Big Pines** ~ Kevin Fotherby

**Booth's Rock** ~ Jim Sternberg

**Spruce Bog Boardwalk** ~ Stacey Finch,

Colin & Benjamin Etmanski

**Beaver Pond** ~ Doug Maynard

**Algonquin Logging Museum Trail**

~ Alice & Eddy Ruddy

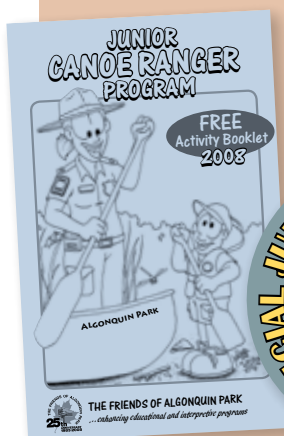
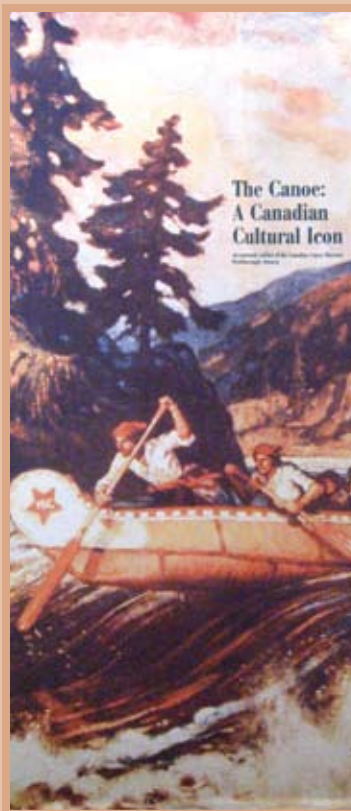
**Barron Canyon & Berm Lake**

~ Fred Blackstein & Bert Cain

**High Falls System, South** ~ Tom Newman

2008

## Canoe Exhibit



The Canoe Exhibit at the Picnic Pavilion featured the outreach exhibit on loan from the Canadian Canoe Museum, *The Canoe: A Canadian Cultural Icon*, and proved very popular with over 11,900 visitors. The Friends of Algonquin Park also had a special gift shop set up at that location.

Other Friends projects also offered from the Canoe Exhibit were Canoe Film Fridays with weekly canoe-themed films being shown at the Outdoor Theatre, various workshops featuring Kevin Callan, Joanie McGuffin, Ray Kettlewell and Portage Store staff, and finally the Junior Canoe Ranger Program that involved children completing activities in a free booklet. Sarah, age 4 from Oshawa was the lucky winner of the Junior Ranger Canoe Prize Pack.



Paddle carving workshop.

## DID YOU KNOW THAT THE FRIENDS OF ALGONQUIN PARK...

- ☐ has 2,675 members
- ☐ coordinated 124 volunteers who provided over 1,600 hours
- ☐ employed:
  - 4 Junior Park Naturalists
  - Archivist (part time)
  - Staffhouse cook
- ☐ provided extra staff for Wolf Howls & Ghosts of Canoe Lake
- ☐ financially supported these new and ongoing projects
  - The Raven, Park Newsletter
  - research in Algonquin Park
  - exhibit maintenance at Visitor Centre
  - ranger cabin roof replacements at Logging Museum
- ☐ new display cases in human history gallery at Visitor Centre
- ☐ upgraded and maintained the Algonquin Park website

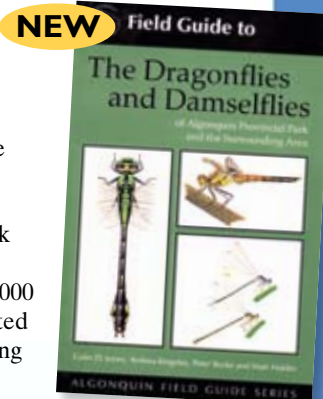
## DO YOU HAVE A PROJECT IDEA?

If you have a proposal for a potential project for The Friends of Algonquin Park, please share this with us by contacting [friends@algonquinpark.on.ca](mailto:friends@algonquinpark.on.ca). Projects are brought to the Board of Directors each November, so potential submissions need to be received by our office by the end of September.

## • OVER 420,000 PUBLICATIONS PRINTED IN 2008!

Most Park visitors probably do not realize that The Friends of Algonquin Park is a major publisher of Park related information. During 2008, over 420,000 publications were printed by The Friends including The Raven (117,265 copies), the brilliantly written Park newsletter, the Park tabloid (180,000 copies), given to each park visitor, and the ever-popular Canoe Routes of Algonquin Park map-brochure (11,000 copies). Other publications printed in 2008:

- Algonquin Logging Museum Guide (40,440 copies)
- Beaver Pond Trail Guide (30, 250 copies)
- Hardwood Lookout Trail Guide (30,000 copies)
- Brent Crater Trail Guide (7,600 copies)
- Names of Algonquin Park (2,600 copies)
- Field Guide to the Dragonflies and Damselflies of Algonquin Provincial Park and Surrounding Area (1,535 copies) **NEW**



2008

## • ONTARIO PARKS PARTNERS BURSARY PROGRAM

Each year students are selected to receive a bursary as an acknowledgement for their leadership and innovation while working in the Ontario Provincial Parks system.



Ontario Parks presented The Friends of Algonquin Park with this plaque in recognition of our continued financial support for this important initiative. The Friends are proud to continue supporting this program.

## NEW PROJECT: BRENT HISTORIC SITE EXHIBIT

The Brent Historic Site Exhibit is one of the projects The Friends is working on and we could use your help. Your photos or memories could help bring this exhibit to life. Lend us your historical photographs and help preserve Brent's cultural heritage. We will scan, document and return them promptly. If desired, you may retain the copyright.

Don't let the irreplaceable history of Brent and Algonquin Park be damaged or rot away as you watch! Store these priceless memories of Algonquin Park in a fireproof, climate-controlled facility specifically designed to preserve Algonquin's heritage.

### How you can help:

- make a donation in honour of this project
- provide information about Brent
- share images or artifacts

Contact the Algonquin Park Archives at [brentproject@algonquinpark.on.ca](mailto:brentproject@algonquinpark.on.ca) to help preserve the past for future generations.



## Loggers Day

On July 26, 2008 over 1,220 people attended the 13th Annual Loggers Day sponsored by The Friends of Algonquin Park and the Algonquin Forestry Authority in cooperation with Ontario Parks.

The Algonquin Logging Museum came to life with demonstrations, exhibitors and activities that allowed visitors of all ages a glimpse into the history and modern practices of logging in Algonquin Park. The interpretive trail at the Logging Museum hosted authentic food, entertaining music, many genuine logging characters, a model alligator and even a few hands-on activities for the 'kids' in all of us.

A special thanks to our partners, exhibitors and volunteers who made this day possible: Algonquin Forestry Authority, Algonquin Ice Company,



Two young campers trying out the cross-cut saw at Loggers Day, 2008.

John Brook, Joshua Dawe, John Foreman, Charles Larking, Brandi LaRochelle, Gordon Lewer, Rory MacKay, Deb Miller, Ontario Parks, Robinson's Independent Grocers, Tom Stephenson, Ray Townsend, Pat & Ron Tozer, Don Tutty, Tim & Tiemen vanderHorn, the Wakami Wailers, and Dan & Paige Wilson.

## • RV SEMINAR - EXTEND YOUR RV SEASON & SUPPORT FOAP!



Frank and Lucy Spence will present their RV Seminar series again in 2009 in conjunction with Ontario Parks and three different Friends Groups - The Friends of Algonquin Park, Friends of MacGregor Point Park and Friends of Pinery Park. Partial proceeds from each seminar go to

each of the respective Friends groups. The Spences will share their vast knowledge and enthusiasm on enjoying RV camping through late fall, winter and early spring. Seminar fees are \$35 per person or \$50 per couple and include a manual, lunch and beverages. Advance registration is required. Each seminar runs the Friday night and all-day Saturday. Algonquin participants will need to bring their own chair.

LOCATION	2009 DATES	CONTACT INFO
Algonquin Provincial Park	October 2 & 3	(613) 637-2828
MacGregor Point Provincial Park	October 23 & 24	(519) 389-6232
Pinery Provincial Park	November 6 & 7	(519) 243-1521

## Living Legacy

*The Friends of Algonquin Park wishes to acknowledge Robert and Mary Taylor who have made a bequest in support of The Friends as part of their living will. In doing so, the Taylors are the first to bestow a gift of property to The Friends of Algonquin Park.*

*The Taylors have requested that this gift specifically enhance research, monitoring and scientific work including programs and displays.*

*As to their motivation, Rob and Mary said, "We decided to give back to Algonquin Park for many happy past times spent there".*

*If you too are interested in celebrating your Algonquin memories by leaving a legacy to the Park, contact the General Manager of The Friends at (613) 637-2828 for assistance in planning your wishes.*



Lee Pauzé (FOAP General Manager), John Winters (Park Superintendent) and Rob & Mary Taylor.



## • HIRE A PARK NATURALIST GUIDE

Join a Park Naturalist in Ontario's oldest and most famous provincial park to experience Algonquin's fascinating natural and cultural history.

The Friends of Algonquin Park offers individuals and organized school, youth, and adult groups a wide variety of educational programs throughout the year. Over 70 programs are available in half-day, full-day, evening and overnight formats. Whether for a short



Friends of Algonquin Park Naturalist conducts a wolf howl.

stay or a multi-day adventure, a special Algonquin Park itinerary can be tailored to your interests.

One of the most popular Group Education Programs deals with the biology and ecology of Algonquin's wolves, as well as the history of wolf howling in the Park. Visit a location where wild wolves may respond to human imitations of their howls.

Or take an Algonquin Logging Museum Tour with a Park Naturalist dressed as an 1830s White Pine logger. Examine logging tools and equipment, see an alligator boat, and curl up in the bunk of a reconstructed logging camp.

Download full program details from:  
[www.algonquinpark.on.ca/programs/group.html](http://www.algonquinpark.on.ca/programs/group.html)



*This Classroom is larger and wilder than most...*

## SNEAK PEAK...

- Junior Ranger Program booklet for 2009 will have new activities that focus on this year's theme of trees and forestry.
- An interpretive panel on the Visitor Centre viewing deck now details what you can see while you are enjoying this breathtaking vista.

## THEY'RE BACK...

**LOGGERS DAY** will return on

Saturday, July 25<sup>th</sup>, 2009 from 10am to 3pm at the Algonquin Logging Museum (km 54.5) near the



Model alligator at Loggers Day.

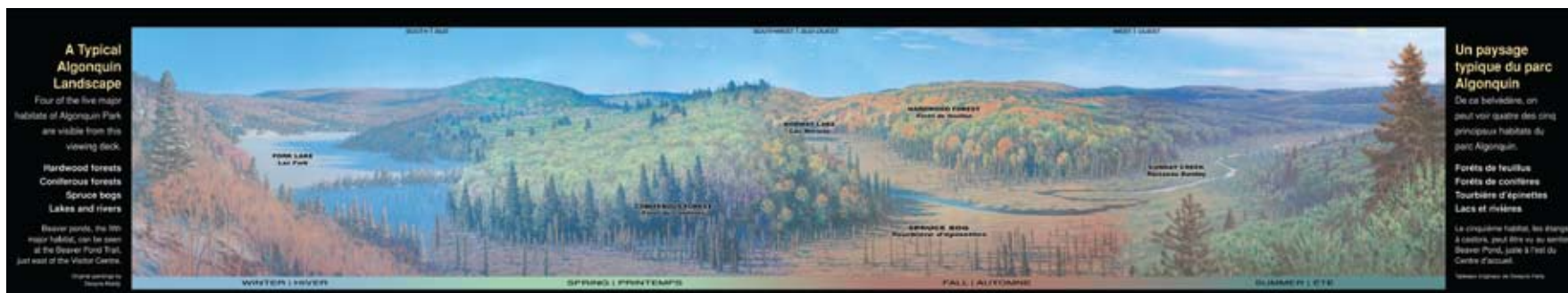
Park's East Gate. Admission is a minimum donation of \$1 per person and an optional Loggers Lunch costing \$7 per person will be served from noon until 2pm or while quantities last.

The ever-popular **WAKAMI WAILERS** will be holding their concert at the Outdoor Theatre (km 35.4) at 7pm on Sunday, July 26<sup>th</sup>, 2009, courtesy of The Friends of Algonquin Park. Admission is a



Wakami Wailers at Loggers Day.

minimum donation of \$1 per person to help offset costs for this event.



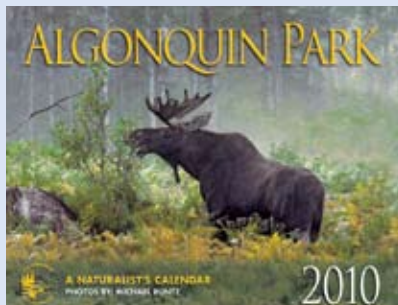
New interpretive panel on the Visitor Centre viewing deck ~ another successful Friends project!

## NEW PRODUCTS

### 10TH ANNUAL ALGONQUIN FOR KIDS T-SHIRT DESIGN CONTEST

Congratulations Nicholas! Our popular Algonquin For Kids T-shirt design contest is now in its tenth year and the winning design from 2008 was created by Nicholas, age 8, entitled "Explore Algonquin." Nicholas' design will soon appear on t-shirts available for sale in the Visitor Centre and Logging Museum bookstores and through our online store with proceeds going back into the Algonquin For Kids interpretive program.

We wish to thank all those who submitted designs in 2008 and encourage your participation again this year. Contest rules and entry forms for our 2009 contest can be picked up after each Algonquin For Kids Program (daily in July and August), or at the Visitor Centre Information Desk or can be downloaded from our website (Child and Youth sizes \$12.95, Adult sizing \$17.95 + taxes).



### 2010 NATURALIST'S CALENDAR

The popular Naturalist's Calendar, published by The Friends of Algonquin Park, will be available for its 15th year in 2009. This calendar features a new collection of images with naturalist messages by photographer Michael Runtz. Images will include Moose, Evening Grosbeak, Red Fox and Eastern Wolf just to name a few. This calendar always proves popular and we are sure this one will not disappoint, so don't delay in obtaining your copy (\$9.95 + taxes).



Algonquin For Kids T-shirt.



Children's Posters.

### BOOKMARKS

This year we are introducing a very appropriate product line for The Friends of Algonquin Park bookstores, you guessed it, bookmarks. This beautiful selection of Algonquin bookmarks will be available in a variety of nature themed images, sure to please any reader. Currently we are working on the production of four: Red Fox, Eastern Wolf, Gray Jay, and Moose - but stay tuned as we may add more to our lineup for 2009. Each will act as a souvenir of Algonquin Park and will provide natural history information on the flora or fauna represented.

### LARGE FORMAT POSTER

We will be adding another large format poster to our already great selection. Image still to be finalized at this point, but will be produced from the photographic collection of Andrew Collett. Andrew was the photographer from our "Algonquin Elements" series of posters.

### CHILDREN'S POSTERS

The Friends of Algonquin are pleased to create two new children's posters again this year. Common Loon, photograph by Eleanor Kee Wellman, and Moose calf, photograph by Peter Ferguson. Following the same format as in previous years, each poster will be 12" x 18" and will provide interpretive information on the animal. Other images currently in the series are Red Fox, Raccoon, Black Bear and Eastern Wolf, available while supplies last (\$2.95 + taxes).

### MAKE YOUR PURCHASE COUNT!

Show your passion for Algonquin and make purchases from The Friends of Algonquin Park at the Visitor Centre, Logging Museum, via phone/email order or online at [www.algonquinpark.on.ca](http://www.algonquinpark.on.ca)

**100% OF PROCEEDS** from sales remain in Algonquin Park to further the Park's educational objectives.

### BOARD OF DIRECTORS

Don Spring - *Chairman*  
Ernie Martelle - *Vice-Chairman*  
Joanna Gertler - *Secretary*  
Gordon Gibson - *Treasurer*  
Brian Maltman - *Past-Chair*  
Claude Cousineau  
Jim Griffin Liz Lundell  
Bob McRae Debbi Miller  
Dan Strickland Pat Tozer  
Ron Tozer Marilyn Welsh

### STAFF

Lee Pauzé  
*General Manager*  
Lori Haines  
*Assistant General Manager*  
Stephanie Allen  
*Administrative Assistant*  
Kevin Clute  
*Group Education Coordinator & Special Projects Leader*  
Stacey Finch  
*Membership & Fundraising Administrator*  
Sharon Hockley  
*Bookstore Manager*  
Maureen Luckasavitch  
*Business Manager*  
Sandra McClure  
*Accounts Manager*

**A big thanks to our seasonal staff that worked with Park visitors during the 2008 season:**

*Group Education Assistants*  
Ethan Huner & Sophie Mazowita  
*Staffhouse Cook (Found Lake)*  
Joe Avery  
*Trail Technician*  
Cathy Holmberg

### Museum Technicians:

Jarret Boyd Natalie Earl  
Larissa English Shannon Frey  
Andrea Fuller Eli Jotham  
Maggie McRae Tammy Patton  
Seaira Priddle Shannon Queen  
Mike Riddell Lauren vanNgen  
Wendy Watson Rebecca Wilson

### Junior Park Naturalists:

Kyle Holloway Sophie Mazowita  
Peter Mills Tim Snieder

**Please support the work we do by making a donation or becoming a member.**

**To support The Friends of Algonquin Park, pick up our brochure at the East or West Gate, or you can visit us either online or at the Visitor Centre and Logging Museum.**

### TYPES OF GIVING

**General Donation** — Make a gift in your own name in support of enhancing the educational and interpretive programs in Algonquin Park. Your name will appear in our Donors Book located in the Visitor Centre lobby.

**In Honour** — Celebrate a special occasion in the life of a friend or family member. An acknowledgement card will be sent to the honouree on your behalf.

**In Memoriam** — Make a gift in memory of a loved one who has passed away. An acknowledgement card will be sent to the family or friends you designate.

**Bequests** — As a lasting tribute, a gift of money or property can be bequeathed to The Friends of Algonquin Park. If you are interested in leaving a legacy to Algonquin, please contact the General Manager for help with your estate planning.

*Thank You For Being Passionate About Algonquin!*

For a list of Donors who supported The Friends of Algonquin Park from April 1, 2008 to March 31, 2009 visit [www.algonquinpark.on.ca](http://www.algonquinpark.on.ca).

**ONLINE BOOKSTORE — [www.algonquinpark.on.ca](http://www.algonquinpark.on.ca)**

**100% proceeds from Bookstore purchases support educational and interpretive programs in Algonquin Park.**

### THE FRIENDS OF ALGONQUIN PARK

Box 248, Whitney, ON K0J 2M0  
Phone: (613) 637-2828 • Fax: (613) 637-2138  
[www.algonquinpark.on.ca/friends](http://www.algonquinpark.on.ca/friends)