

The 2010 Algonquin Park Trout Fishing Survey

Algonquin Provincial Park is home to the world's largest contiguous group of naturally reproducing brook trout lakes. Since 2005, Ontario Ministry of Natural Resources personnel from the Algonquin Fisheries Assessment Unit (AFAU) and Ontario Parks have tried to acquire sport fishing data from as many natural trout waters as possible.

When Park backcountry visitors registered at selected offices, they were asked by staff if they planned to fish for trout. If so, they had the option of taking a voluntary survey package with them to record the effort, catch and trout harvest for their party. The package consisted of a small form printed on waterproof paper, pencil, information sheet and postage-paid return envelope in a 6 by 9 inch ziplock plastic bag.

Since Park interior visitors are on vacation, and not on the government payroll, we make data recording simple and concise:



Ontario Ministry of Natural Resources
Algonquin Fisheries Assessment Unit & Ontario Parks

The Algonquin Park Trout Fishing Survey

The example below is for a group of six people who fished on three different lakes over two days. It shows the average number of hours fished on each lake and the number of brook trout and lake trout that they caught and kept.

Month	Day	Lake fished	No. of people fishing	Average hours fished	Total Number of BROOK TROUT		Total Number of LAKE TROUT	
					Caught	Kept	Caught	Kept
May	10	Big Crow	6	3	5	3	0	0
May	11	Lavieille	4	4.5	7	3	4	2
	"	L. Crooked	2	3	4	2		

Please spend a couple of minutes each day to record your fishing effort (to the nearest half hour) and catch, even if nothing is caught.

14 spaces
on form



Month	Day	Lake fished	No. of people fishing	Average hours fished	Total Number of BROOK TROUT		Total Number of LAKE TROUT	
					Caught	Kept	Caught	Kept

In June, a preliminary summary is posted on the Algonquin Park web site. The summary that follows includes all of the returns received up to December 10, 2010.

Thank you to everyone who makes this survey so meaningful and successful.

We are most grateful to The Friends of Algonquin for their generous support and for allowing us to present the results of this survey on their site. The Friends also donated four \$25 gift certificates as prize incentives to participants. **We encourage everyone to become a member of this fine organization.** The Friends are responsible for publishing all of the excellent books on fish and fishing in the Park.

In addition, we would like to thank Rick Holl and Mark Weist of EGB Canada, who are committed to the sustainable natural trout populations of Algonquin Park. They kindly donated \$500 worth of prizes, in the form of five \$100 EGB lures/tackle boxes, and discounted the price for the 1000 lures that were provided on a first come, first served basis to this year's survey participants. EGB spoons <http://www.egbcanada.com> are renowned for their ability to attract trout, and they are still hand crafted in Switzerland. In case you've ever wondered, the 'EG' stands for Ernst Gubler, who designed the lure, and the 'B' is for Basel, his birthplace.

The Winners

Winners of the \$100 EGB prize packages were: D.L. of Welland, T.P. of Guelph, R.G. of Collingwood, K.S. of Kingston and B.J. of Ottawa.

Winners of the \$25 Friends of Algonquin gift certificate were: W.K. of Markham, T.K. of Barrie, S.G. of Kingston and M.N. of Thunder Bay.

The Results

In total, we received 409 returns (298 in postage-paid envelopes), representing the angling efforts of more than 1200 Park visitors. There was at least one report from 190 different lakes and 16 rivers in Algonquin Provincial Park.

Table 1 lists the Top 40 lakes sorted by the amount of **fishing effort** in rod hours (one person fishing for one hour = 1 rod hour).

Table 2 lists the Top 40 lakes sorted by the number of hours required to catch a trout, a measure of **angling success**. We used only lakes and rivers for which we had at least 30 rod hours of effort from three parties or more.

Table 3 lists a complete summary of the results.

Table Definitions

Waterbody - either a lake, river, stream or creek. We are primarily interested in effort and catch results from the natural (unstocked) trout waters in Algonquin Provincial Park.

Angler - an individual who is fishing for trout.

Party - one or more anglers who registered to camp in the Park's interior.

Report - a daily record of effort and catch. Refer to the example shown on the survey form on the previous page. Each form had sufficient space for 14 daily records.

Rod hours - the number of people fishing multiplied by time that they fished.

Trout/hour - this is a measure of catch success, CUE or Catch per Unit of Effort. For decades, from a range of trout lakes in Algonquin Park, the average CUE has been about 0.30.

Trout Fishing is More Than Numbers

In this fast-paced world, it's a rare privilege to pursue wild, unstocked trout in their natural environment. With good friends we can eat, drink, laugh and share great times to remember for years to come. As one of our female participants so eloquently phrased it in 2008:

"Where else in the world can you set out with some cooking oil and a frying pan and know that we will catch our dinner every night? This is why this amazing resource (Algonquin Park) should be protected, so that people can enjoy its beautiful scenery, clean lakes and great fishing for generations to come."

Should you have any questions regarding specific waters, please e-mail or phone Greg Betteridge of the Algonquin Fisheries Assessment Unit, located at the East Gate.

greg.betteridge@ontario.ca. 613 637-2780 Ext. 271

SUMMARY TABLE 1 for the 2010 Algonquin Park Trout Fishing Survey

The 'Top 40' Waterbodies sorted by reported fishing effort

Waterbody	Total Number of:			Rod Hours	BROOK TROUT			LAKE TROUT			TOTAL TROUT			CATCH	
	Anglers	Parties	Reports		Caught	Kept	Percent Kept	Caught	Kept	Percent Kept	Caught	Kept	Percent Kept	Trout/ Hour	Hours/ Trout
Lavieille	81	27	80	954.0	624	190	30%	95	47	49%	719	237	33%	0.75	1.3
Opeongo	59	16	37	953.5	1	0	0%	97	67	69%	98	67	68%	0.10	9.7
Ralph Bice	130	34	103	815.5	8	8	100%	226	115	51%	234	123	53%	0.29	3.5
Dickson	84	28	72	791.5	393	129	33%	11	1	9%	404	130	32%	0.51	2.0
Hogan	64	17	45	662.0	405	193	48%	56	17	30%	461	210	46%	0.70	1.4
Big Crow	38	11	36	612.0	118	78	66%	26	15	58%	144	93	65%	0.24	4.3
Merchant	62	14	24	472.0	1	1	100%	69	55	80%	70	56	80%	0.15	6.7
LaMuir	42	12	26	439.0	59	27	46%	199	34	17%	258	61	24%	0.59	1.7
Cedar	23	8	18	379.5	4	0	0%	22	19	86%	26	19	73%	0.07	14.6
North River Lake	48	14	31	348.0	138	76	55%	22	11	50%	160	87	54%	0.46	2.2
Little Trout	59	19	35	340.5	91	28	31%	0	0		91	28	31%	0.27	3.7
Cauliflower	20	4	15	300.0	36	24	67%	43	29	67%	79	53	67%	0.26	3.8
Pen	34	13	28	264.5	37	15	41%	31	10	32%	68	25	37%	0.26	3.9
Happy Isle	70	20	37	253.8	0	0		49	38	78%	49	38	78%	0.19	5.2
Shirley	28	10	23	251.0	0	0		41	26	63%	41	26	63%	0.16	6.1
Tim	26	10	29	250.0	0	0		36	24	67%	36	24	67%	0.14	6.9
Big Trout	32	12	36	246.5	29	8	28%	68	28	41%	97	36	37%	0.39	2.5
Bonnechere	24	14	31	235.3	0	0		90	35	39%	90	35	39%	0.38	2.6
Crow River	50	18	31	230.0	170	40	24%	0	0		170	40	24%	0.74	1.4
Louisa	47	17	36	207.5	0	0		102	41	40%	102	41	40%	0.49	2.0
Mink	36	9	15	204.5	8	8	100%	25	17	68%	33	25	76%	0.16	6.2
Gilmour	10	2	8	202.0	9	3	33%	51	21	41%	60	24	40%	0.30	3.4
McCraney	24	8	24	200.0	0	0		36	26	72%	36	26	72%	0.18	5.6
Mouse	14	6	15	191.5	65	21	32%	8	4	50%	73	25	34%	0.38	2.6
Redrock	30	10	15	190.5	64	19	30%	5	3	60%	69	22	32%	0.36	2.8
Daisy	24	11	21	181.0	0	0		32	13	41%	32	13	41%	0.18	5.7
Burnt Island	16	9	25	180.0	0	0		77	17	22%	77	17	22%	0.43	2.3
Welcome	29	11	20	167.0	63	20	32%	0	0		63	20	32%	0.38	2.7
Head	24	6	15	164.0	2	1	50%	39	20	51%	41	21	51%	0.25	4.0
Manitou	21	8	14	155.0	10	6	60%	74	43	58%	84	49	58%	0.54	1.8
Big Porcupine	16	6	25	140.8	20	7	35%	26	6	23%	46	13	28%	0.33	3.1
Booth	17	8	27	131.1	0	0		27	16	59%	27	16	59%	0.21	4.9
Kioshkokwi	24	10	16	128.5	1	1	100%	12	6	50%	13	7	54%	0.10	9.9
Catfish	21	6	13	121.0	7	2	29%	13	7	54%	20	9	45%	0.17	6.1
Petawawa River	39	13	20	115.5	178	43	24%	2	2	100%	180	45	25%	1.56	0.6
Biggar	16	7	12	114.5	15	7	47%	11	2	18%	26	9	35%	0.23	4.4
Harness	28	8	15	111.5	0	0		25	14	56%	25	14	56%	0.22	4.5
North Tea	21	8	16	109.5	2	2	100%	5	4	80%	7	6	86%	0.06	15.6
North Depot	19	8	17	108.0	16	12	75%	11	6	55%	27	18	67%	0.25	4.0
Allan	17	5	18	106.5	37	8	22%	2	0	0%	39	8	21%	0.37	2.7

SUMMARY TABLE 2 for the 2010 Algonquin Park Trout Fishing Survey

The 'Top 40' Waterbodies sorted by success rate (minimum of 30 rod hours reported by at least 3 different groups)

Waterbody	Total Number of:			Rod Hours	BROOK TROUT			LAKE TROUT			TOTAL TROUT			CATCH	
	Anglers	Parties	Reports		Caught	Kept	Percent Kept	Caught	Kept	Percent Kept	Caught	Kept	Percent Kept	Trout/ Hour	Hours/ Trout
Nipissing River	15	8	17	69.0	206	29	14%	0	0		206	29	14%	2.99	0.3
Petawawa River	39	13	20	115.5	178	43	24%	2	2	100%	180	45	25%	1.56	0.6
Little Crooked	13	5	8	71.0	64	12	19%	0	0		64	12	19%	0.90	1.1
Tim River	29	9	12	97.0	76	31	41%	0	0		76	31	41%	0.78	1.3
Club	13	5	9	70.0	54	16	30%	0	0		54	16	30%	0.77	1.3
Lavieille	81	27	80	954.0	624	190	30%	95	47	49%	719	237	33%	0.75	1.3
Crow River	50	18	31	230.0	170	40	24%	0	0		170	40	24%	0.74	1.4
Hogan	64	17	45	662.0	405	193	48%	56	17	30%	461	210	46%	0.70	1.4
Lauder	9	3	8	34.0	21	4	19%	0	0		21	4	19%	0.62	1.6
LaMuir	42	12	26	439.0	59	27	46%	199	34	17%	258	61	24%	0.59	1.7
Rence	20	7	10	53.0	30	3	10%	0	0		30	3	10%	0.57	1.8
Three Mile	8	4	7	51.0	24	20	83%	4	3	75%	28	23	82%	0.55	1.8
Manitou	21	8	14	155.0	10	6	60%	74	43	58%	84	49	58%	0.54	1.8
Rock	14	6	10	40.0	19	2	11%	2	1	50%	21	3	14%	0.53	1.9
Dickson	84	28	72	791.5	393	129	33%	11	1	9%	404	130	32%	0.51	2.0
Length	25	4	4	79.0	39	30	77%	0	0		39	30	77%	0.49	2.0
Louisa	47	17	36	207.5	0	0		102	41	40%	102	41	40%	0.49	2.0
David	17	6	10	71.0	33	6	18%	0	0		33	6	18%	0.46	2.2
North River Lake	48	14	31	348.0	138	76	55%	22	11	50%	160	87	54%	0.46	2.2
Smoke	6	3	4	34.0	1	0	0%	14	0	0%	15	0	0%	0.44	2.3
McGarvey	12	4	7	34.5	0	0		15	4	27%	15	4	27%	0.43	2.3
Burnt Island	16	9	25	180.0	0	0		77	17	22%	77	17	22%	0.43	2.3
Lynx	18	5	10	85.0	13	5	38%	22	7	32%	35	12	34%	0.41	2.4
Big Trout	32	12	36	246.5	29	8	28%	68	28	41%	97	36	37%	0.39	2.5
Chickaree	13	4	6	41.0	2	1	50%	14	8	57%	16	9	56%	0.39	2.6
Bonnechere	24	14	31	235.3	0	0		90	35	39%	90	35	39%	0.38	2.6
Mouse	14	6	15	191.5	65	21	32%	8	4	50%	73	25	34%	0.38	2.6
Welcome	29	11	20	167.0	63	20	32%	0	0		63	20	32%	0.38	2.7
Kirkwood	29	8	10	40.0	0	0		15	6	40%	15	6	40%	0.38	2.7
Allan	17	5	18	106.5	37	8	22%	2	0	0%	39	8	21%	0.37	2.7
Redrock	30	10	15	190.5	64	19	30%	5	3	60%	69	22	32%	0.36	2.8
Harry	19	7	11	60.0	21	2	10%	0	0		21	2	10%	0.35	2.9
Big Porcupine	16	6	25	140.8	20	7	35%	26	6	23%	46	13	28%	0.33	3.1
Pardee	23	7	10	31.0	0	0		10	2	20%	10	2	20%	0.32	3.1
Burntroot	16	8	13	50.5	10	6	60%	6	2	33%	16	8	50%	0.32	3.2
Lawrence	12	5	8	57.0	0	0		17	5	29%	17	5	29%	0.30	3.4
Ralph Bice	130	34	103	815.5	8	8	100%	226	115	51%	234	123	53%	0.29	3.5
Little Trout	59	19	35	340.5	91	28	31%	0	0		91	28	31%	0.27	3.7
Cauliflower	20	4	15	300.0	36	24	67%	43	29	67%	79	53	67%	0.26	3.8
Pen	34	13	28	264.5	37	15	41%	31	10	32%	68	25	37%	0.26	3.9

SUMMARY TABLE 3 for the 2010 Algonquin Park Trout Fishing Survey

Sorted by Waterbody

Waterbody	Total Number of:				BROOK TROUT			LAKE TROUT			TOTAL TROUT			CATCH	
	Anglers	Parties	Reports	Rod Hours	Caught	Kept	Percent Kept	Caught	Kept	Percent Kept	Caught	Kept	Percent Kept	Trout/ Hour	Hours/ Trout
Allan	17	5	18	106.5	37	8	22%	2	0	0%	39	8	21%	0.37	2.7
Amable du Fond River	2	1	1	2.0							0	0		0.00	N/A
Animoosh	1	1	1	0.5	1	0	0%				1	0	0%	2.00	0.5
Aylen River	2	1	1	9.0	4	3	75%				4	3	75%	0.44	2.3
Big Bissett	4	2	5	33.0	5	0	0%	0	0		5	0	0%	0.15	6.6
Big Bob	6	3	5	18.0	0	0		0	0		0	0		0.00	N/A
Big Crow	38	11	36	612.0	118	78	66%	26	15	58%	144	93	65%	0.24	4.3
Big Mink	1	5	1	12.5				2	2	100%	2	2	100%	0.16	6.3
Big Porcupine	16	6	25	140.8	20	7	35%	26	6	23%	46	13	28%	0.33	3.1
Big Thunder	1	2	1	4.0							0	0		0.00	N/A
Big Trout	32	12	36	246.5	29	8	28%	68	28	41%	97	36	37%	0.39	2.5
Biggar	16	7	12	114.5	15	7	47%	11	2	18%	26	9	35%	0.23	4.4
Bissett	5	1	3	85.0	22	19	86%				22	19	86%	0.26	3.9
Bonnechere	24	14	31	235.3	0	0		90	35	39%	90	35	39%	0.38	2.6
Booth	17	8	27	131.1	0	0		27	16	59%	27	16	59%	0.21	4.9
Brewer	1	1	1	4.0							0	0		0.00	N/A
Bruce	2	2	3	7.0							0	0		0.00	N/A
Burnt Island	16	9	25	180.0	0	0		77	17	22%	77	17	22%	0.43	2.3
Burntroot	16	8	13	50.5	10	6	60%	6	2	33%	16	8	50%	0.32	3.2
Cache	4	2	2	11.0	0	0		4	3	75%	4	3	75%	0.36	2.8
Calumet	5	1	1	7.5	5	2	40%	8	4	50%	13	6	46%	1.73	0.6
Canisbay	2	1	4	52.0	0	0		15	11	73%	15	11	73%	0.29	3.5
Canoe	1	1	1	0.5							0	0		0.00	N/A
Carl Wilson	4	2	6	74.0	42	24	57%	3	0	0%	45	24	53%	0.61	1.6
Casey	9	3	4	21.0	4	4	100%	0	0		4	4	100%	0.19	5.3
Catfish	21	6	13	121.0	7	2	29%	13	7	54%	20	9	45%	0.17	6.1
Cauchon	1	1	1	2.5				2	0	0%	2	0	0%	0.80	1.3
Cauliflower	20	4	15	300.0	36	24	67%	43	29	67%	79	53	67%	0.26	3.8
Cedar	23	8	18	379.5	4	0	0%	22	19	86%	26	19	73%	0.07	14.6
Chibiabos	2	1	1	1.0							0	0		0.00	N/A
Chickaree	13	4	6	41.0	2	1	50%	14	8	57%	16	9	56%	0.39	2.6
Clara	4	1	1	5.0							0	0		0.00	N/A
Club	13	5	9	70.0	54	16	30%	0	0		54	16	30%	0.77	1.3
Clydegale	4	2	2	10.0	1	0	0%	0	0		1	0	0%	0.10	10.0
Coon	4	1	1	4.0							0	0		0.00	N/A
Costello	1	1	1	4.0							0	0		0.00	N/A
Cradle	16	5	5	22.0	0	0		10	1	10%	10	1	10%	0.45	2.2

SUMMARY TABLE 3 for the 2010 Algonquin Park Trout Fishing Survey

Sorted by Waterbody

Waterbody	Total Number of:				BROOK TROUT			LAKE TROUT			TOTAL TROUT			CATCH	
	Anglers	Parties	Reports	Rod Hours	Caught	Kept	Percent Kept	Caught	Kept	Percent Kept	Caught	Kept	Percent Kept	Trout/ Hour	Hours/ Trout
Crotch	2	1	1	2.0				1	1	100%	1	1	100%	0.50	2.0
Crow River	50	18	31	230.0	170	40	24%	0	0		170	40	24%	0.74	1.4
Daisy	24	11	21	181.0	0	0		32	13	41%	32	13	41%	0.18	5.7
David	17	6	10	71.0	33	6	18%	0	0		33	6	18%	0.46	2.2
Delano	2	1	1	3.0				0	0		0	0		0.00	N/A
Devine	2	1	1					0	0		0	0		0.00	N/A
Dickson	84	28	72	791.5	393	129	33%	11	1	9%	404	130	32%	0.51	2.0
Dividing	6	2	4	42.0	7	5	71%	0	0		7	5	71%	0.17	6.0
East Galipo	4	1	1	4.0							0	0		0.00	N/A
Erables	2	1	1	4.0							0	0		0.00	N/A
Eustache	5	2	2	13.5	0	0		7	4	57%	7	4	57%	0.52	1.9
Farm	6	3	3	11.0	0	0		0	0		0	0		0.00	N/A
Farncomb	4	2	2	9.0	11	2	18%	0	0		11	2	18%	1.22	0.8
Finch	2	1	1	10.0	6	0	0%				6	0	0%	0.60	1.7
Fisher	4	1	1	8.0							0	0		0.00	N/A
Florence	5	2	3	9.5	5	2	40%	0	0		5	2	40%	0.53	1.9
Found	1	1	1	3.0							0	0		0.00	N/A
Frank	7	3	4	19.5	13	6	46%				13	6	46%	0.67	1.5
Frost	4	1	2	16.0	15	3	20%	0	0		15	3	20%	0.94	1.1
Galipo River	6	3	3	16.5	12	0	0%	0	0		12	0	0%	0.73	1.4
Gem	13	3	3	51.3	3	1	33%	0	0		3	1	33%	0.06	17.1
Gibson	2	1	5	40.0	20	7	35%	0	0		20	7	35%	0.50	2.0
Gilmour	10	2	8	202.0	9	3	33%	51	21	41%	60	24	40%	0.30	3.4
Godda	8	2	3	69.0	1	1	100%	0	0		1	1	100%	0.01	69.0
Gouinlock	2	1	3	20.0	0	0		5	5	100%	5	5	100%	0.25	4.0
Grand	9	1	4	56.5	0	0		1	1	100%	1	1	100%	0.02	56.5
Hambone	5	3	3	4.5	0	0		0	0		0	0		0.00	N/A
Happy Isle	70	20	37	253.8	0	0		49	38	78%	49	38	78%	0.19	5.2
Harness	28	8	15	111.5	0	0		25	14	56%	25	14	56%	0.22	4.5
Harry	19	7	11	60.0	21	2	10%	0	0		21	2	10%	0.35	2.9
Head	24	6	15	164.0	2	1	50%	39	20	51%	41	21	51%	0.25	4.0
Hemlock	10	2	2	11.0	2	1	50%	0	0		2	1	50%	0.18	5.5
Hidden	1	1	1	1.0	1	1	100%				1	1	100%	1.00	1.0
Hilliard	3	2	4	12.0	0	0		0	0		0	0		0.00	N/A
Hogan	64	17	45	662.0	405	193	48%	56	17	30%	461	210	46%	0.70	1.4
Hornbeam	4	2	3	7.0	12	4	33%	0	0		12	4	33%	1.71	0.6
Hot	3	1	1	6.0							0	0		0.00	N/A

SUMMARY TABLE 3 for the 2010 Algonquin Park Trout Fishing Survey

Sorted by Waterbody

Waterbody	Total Number of:				BROOK TROUT			LAKE TROUT			TOTAL TROUT			CATCH	
	Anglers	Parties	Reports	Rod Hours	Caught	Kept	Percent Kept	Caught	Kept	Percent Kept	Caught	Kept	Percent Kept	Trout/ Hour	Hours/ Trout
Inbetween	4	1	1	4.0							0	0		0.00	N/A
Indian Pipe	4	2	2	1.5	1	1	100%				1	1	100%	0.67	1.5
Islet	3	1	1	9.0							0	0		0.00	N/A
Jack	4	1	1	8.0							0	0		0.00	N/A
Joe	1	1	2	1.0							0	0		0.00	N/A
Jubilee	3	1	1	18.0							0	0		0.00	N/A
Kenneth	5	1	1	10.0				1	1	100%	1	1	100%	0.10	10.0
Kioshkokwi	24	10	16	128.5	1	1	100%	12	6	50%	13	7	54%	0.10	9.9
Kirkwood	29	8	10	40.0	0	0		15	6	40%	15	6	40%	0.38	2.7
Kitty	6	3	3	4.0							0	0		0.00	N/A
LaMuir	42	12	26	439.0	59	27	46%	199	34	17%	258	61	24%	0.59	1.7
LaTour Creek	2	1	1	4.0	20	0	0%				20	0	0%	5.00	0.2
Lauder	9	3	8	34.0	21	4	19%	0	0		21	4	19%	0.62	1.6
Lavieille	81	27	80	954.0	624	190	30%	95	47	49%	719	237	33%	0.75	1.3
Lawren Harris	1	1	1	2.5							0	0		0.00	N/A
Lawrence	12	5	8	57.0	0	0		17	5	29%	17	5	29%	0.30	3.4
Length	25	4	4	79.0	39	30	77%	0	0		39	30	77%	0.49	2.0
Little Coon	11	4	4	10.5	0	0		0	0		0	0		0.00	N/A
Little Crooked	13	5	8	71.0	64	12	19%	0	0		64	12	19%	0.90	1.1
Little Crow	18	5	7	35.5	3	3	100%	0	0		3	3	100%	0.08	11.8
Little Dickson	2	1	5	41.0	14	1	7%	22	1	5%	36	2	6%	0.88	1.1
Little Joe	2	1	1	6.0							0	0		0.00	N/A
Little Madawaska River	7	2	2	5.0	21	7	33%	0	0		21	7	33%	4.20	0.2
Little Mink	2	1	1	1.0				1	1	100%	1	1	100%	1.00	1.0
Little Minnow	2	1	2	20.0	2	0	0%				2	0	0%	0.10	10.0
Little Misty	1	1	1	0.5							0	0		0.00	N/A
Little Osler	8	2	4	19.0	12	7	58%	0	0		12	7	58%	0.63	1.6
Little Trout	59	19	35	340.5	91	28	31%	0	0		91	28	31%	0.27	3.7
Longbow	8	2	2	4.0							0	0		0.00	N/A
Longer	18	5	6	29.0	4	1	25%	2	1	50%	6	2	33%	0.21	4.8
Loontail Creek	2	1	1	1.0							0	0		0.00	N/A
Lost Coin	7	2	6	50.0	19	11	58%	0	0		19	11	58%	0.38	2.6
Lost Dog	9	3	9	56.0	3	1	33%	11	2	18%	14	3	21%	0.25	4.0
Lost Joe	2	1	1	2.0							0	0		0.00	N/A
Louisa	47	17	36	207.5	0	0		102	41	40%	102	41	40%	0.49	2.0
Lower Spectacle	2	1	2	6.0	2	0	0%				2	0	0%	0.33	3.0
Luckless	4	2	4	11.0	4	3	75%	8	6	75%	12	9	75%	1.09	0.9

SUMMARY TABLE 3 for the 2010 Algonquin Park Trout Fishing Survey

Sorted by Waterbody

Waterbody	Total Number of:				BROOK TROUT			LAKE TROUT			TOTAL TROUT			CATCH	
	Anglers	Parties	Reports	Rod Hours	Caught	Kept	Percent Kept	Caught	Kept	Percent Kept	Caught	Kept	Percent Kept	Trout/ Hour	Hours/ Trout
Lynx	18	5	10	85.0	13	5	38%	22	7	32%	35	12	34%	0.41	2.4
Magnetawan	1	1	1	1.0							0	0		0.00	N/A
Mangotasi	2	1	2	6.0							0	0		0.00	N/A
Mangotasi Creek	1	1	1	1.0	4	4	100%				4	4	100%	4.00	0.3
Manitou	21	8	14	155.0	10	6	60%	74	43	58%	84	49	58%	0.54	1.8
Maple	2	1	1	4.0	1	0	0%				1	0	0%	0.25	4.0
Maple Leaf	1	1	4	9.8	0	0		2	1	50%	2	1	50%	0.21	4.9
Marie	32	6	8	64.0	5	4	80%	0	0		5	4	80%	0.08	12.8
Marmot	12	2	2	16.0	17	12	71%				17	12	71%	1.06	0.9
McCraney	24	8	24	200.0	0	0		36	26	72%	36	26	72%	0.18	5.6
McGarvey	12	4	7	34.5	0	0		15	4	27%	15	4	27%	0.43	2.3
McIntosh	9	4	6	20.0	1	0	0%	2	1	50%	3	1	33%	0.15	6.7
McKaskill	6	1	1	6.0							0	0		0.00	N/A
Merchant	62	14	24	472.0	1	1	100%	69	55	80%	70	56	80%	0.15	6.7
Merganser	6	3	6	25.0	4	2	50%	0	0		4	2	50%	0.16	6.3
Mink	36	9	15	204.5	8	8	100%	25	17	68%	33	25	76%	0.16	6.2
Mink Creek	1	1	2	2.5	3	2	67%				3	2	67%	1.20	0.8
Misty	9	3	4	13.0	0	0		0	0		0	0		0.00	N/A
Mouse	14	6	15	191.5	65	21	32%	8	4	50%	73	25	34%	0.38	2.6
Mubwayaka	4	2	3	10.5	1	1	100%	0	0		1	1	100%	0.10	10.5
Myra	4	1	1	16.0	10	9	90%				10	9	90%	0.63	1.6
Nadine	2	1	3	24.0	7	6	86%	0	0		7	6	86%	0.29	3.4
Narrowbag	7	1	1	2.0							0	0		0.00	N/A
Nepawin	4	1	1	8.0	2	2	100%				2	2	100%	0.25	4.0
Nipissing River	15	8	17	69.0	206	29	14%	0	0		206	29	14%	2.99	0.3
North Cuckoo	12	2	3	42.5	7	4	57%	0	0		7	4	57%	0.16	6.1
North Depot	19	8	17	108.0	16	12	75%	11	6	55%	27	18	67%	0.25	4.0
North Galipo	4	1	1	4.0							0	0		0.00	N/A
North River	2	1	2	3.0	2	1	50%				2	1	50%	0.67	1.5
North River Lake	48	14	31	348.0	138	76	55%	22	11	50%	160	87	54%	0.46	2.2
North Tea	21	8	16	109.5	2	2	100%	5	4	80%	7	6	86%	0.06	15.6
O`Gorman	4	1	1	3.0							0	0		0.00	N/A
Opeongo	59	16	37	953.5	1	0	0%	97	67	69%	98	67	68%	0.10	9.7
Opeongo River	2	1	2	6.0							0	0		0.00	N/A
Osler	8	2	5	53.0	38	30	79%	0	0		38	30	79%	0.72	1.4
Otterslide	4	2	2	7.0				1	0	0%	1	0	0%	0.14	7.0
Owl	7	3	6	54.0	0	0		9	6	67%	9	6	67%	0.17	6.0

SUMMARY TABLE 3 for the 2010 Algonquin Park Trout Fishing Survey

Sorted by Waterbody

Waterbody	Total Number of:				BROOK TROUT			LAKE TROUT			TOTAL TROUT			CATCH	
	Anglers	Parties	Reports	Rod Hours	Caught	Kept	Percent Kept	Caught	Kept	Percent Kept	Caught	Kept	Percent Kept	Trout/ Hour	Hours/ Trout
Pardee	23	7	10	31.0	0	0		10	2	20%	10	2	20%	0.32	3.1
Pen	34	13	28	264.5	37	15	41%	31	10	32%	68	25	37%	0.26	3.9
Petawawa River	39	13	20	115.5	178	43	24%	2	2	100%	180	45	25%	1.56	0.6
Philip	3	1	1	15.0	1	1	100%				1	1	100%	0.07	15.0
Phipps	27	7	8	24.5	0	0		3	1	33%	3	1	33%	0.12	8.2
Pinetree	8	1	2	80.0	0	0		0	0		0	0		0.00	N/A
Plumb	7	1	1	12.5							0	0		0.00	N/A
Proulx	38	11	13	105.0	15	7	47%	1	0	0%	16	7	44%	0.15	6.6
Provoking	3	2	2	24.0							0	0		0.00	N/A
Queer	15	5	10	82.5	6	4	67%	0	0		6	4	67%	0.07	13.8
Radiant	2	1	1	8.0							0	0		0.00	N/A
Ragged	14	6	10	45.0	2	0	0%	1	0	0%	3	0	0%	0.07	15.0
Rain	10	4	6	43.5	0	0		0	0		0	0		0.00	N/A
Ralph Bice	130	34	103	815.5	8	8	100%	226	115	51%	234	123	53%	0.29	3.5
Raven	1	1	3	7.5	1	1	100%	1	1	100%	2	2	100%	0.27	3.8
Redrock	30	10	15	190.5	64	19	30%	5	3	60%	69	22	32%	0.36	2.8
Rence	20	7	10	53.0	30	3	10%	0	0		30	3	10%	0.57	1.8
Robitaille	2	1	2	8.0				1	1	100%	1	1	100%	0.13	8.0
Robitaille Creek	2	1	1	6.0	2	1	50%				2	1	50%	0.33	3.0
Rock	14	6	10	40.0	19	2	11%	2	1	50%	21	3	14%	0.53	1.9
Rod and Gun	2	1	1	0.5							0	0		0.00	N/A
Rosebary	6	2	7	76.0	13	12	92%	6	5	83%	19	17	89%	0.25	4.0
Round Island	1	1	1	2.0				2	1	50%	2	1	50%	1.00	1.0
Ryan	7	2	2	14.0				1	0	0%	1	0	0%	0.07	14.0
Sawyer	4	2	3	18.0	0	0		0	0		0	0		0.00	N/A
Scott	2	1	1	7.0	2	0	0%				2	0	0%	0.29	3.5
Shirley	28	10	23	251.0	0	0		41	26	63%	41	26	63%	0.16	6.1
Sisco	6	1	1	21.0				3	3	100%	3	3	100%	0.14	7.0
Sitting Man	2	1	1	4.0							0	0		0.00	N/A
Skylark	5	2	2	5.0	6	0	0%				6	0	0%	1.20	0.8
Smoke	6	3	4	34.0	1	0	0%	14	0	0%	15	0	0%	0.44	2.3
Source	4	3	3	5.3	0	0		0	0		0	0		0.00	N/A
South Galipo	4	1	1	6.0							0	0		0.00	N/A
South Madawaska River	2	1	3	18.0	18	0	0%	0	0		18	0	0%	1.00	1.0
St. Andrews	32	6	8	58.0	0	0		4	2	50%	4	2	50%	0.07	14.5
St. Anthony	4	1	1	20.0							0	0		0.00	N/A
Stratton	12	2	2	8.0	0	0		0	0		0	0		0.00	N/A

SUMMARY TABLE 3 for the 2010 Algonquin Park Trout Fishing Survey

Sorted by Waterbody

Waterbody	Total Number of:				BROOK TROUT			LAKE TROUT			TOTAL TROUT			CATCH	
	Anglers	Parties	Reports	Rod Hours	Caught	Kept	Percent Kept	Caught	Kept	Percent Kept	Caught	Kept	Percent Kept	Trout/ Hour	Hours/ Trout
Sundassa	2	1	1	2.0							0	0		0.00	N/A
Sunday	3	1	3	54.5	0	0		0	0		0	0		0.00	N/A
Tea	1	1	1	0.8	0	0		0	0		0	0		0.00	N/A
Tepee	1	1	2	1.0							0	0		0.00	N/A
Three Mile	8	4	7	51.0	24	20	83%	4	3	75%	28	23	82%	0.55	1.8
Tim	26	10	29	250.0	0	0		36	24	67%	36	24	67%	0.14	6.9
Tim River	29	9	12	97.0	76	31	41%	0	0		76	31	41%	0.78	1.3
Timberwolf	2	2	3	8.0	0	0		11	3	27%	11	3	27%	1.38	0.7
Tom Thomson	4	3	6	14.5	3	1	33%	1	0	0%	4	1	25%	0.28	3.6
Two Rivers	1	1	1	3.0				1	0	0%	1	0	0%	0.33	3.0
Upper Head	5	1	1	4.0				5	2	40%	5	2	40%	1.25	0.8
Waterclear	14	6	8	40.0	6	3	50%	3	3	100%	9	6	67%	0.23	4.4
Welcome	29	11	20	167.0	63	20	32%	0	0		63	20	32%	0.38	2.7
Wendigo	4	2	4	35.0	2	2	100%	14	3	21%	16	5	31%	0.46	2.2
Wendigoes	3	1	2	24.0	60	13	22%	0	0		60	13	22%	2.50	0.4
West Koko	2	1	1	1.0							0	0		0.00	N/A
Whiskeyjack	1	1	1	1.0							0	0		0.00	N/A
Whitebirch	20	4	4	69.5	0	0		12	10	83%	12	10	83%	0.17	5.8
Wilkins	2	1	1	5.0				4	4	100%	4	4	100%	0.80	1.3
Woodcock	2	1	1	3.0	2	2	100%				2	2	100%	0.67	1.5
Wright	6	3	3	8.0	2	0	0%	4	3	75%	6	3	50%	0.75	1.3
TOTALS	2564	863	1694	15694.33	3764	1388	37%	2078	971	47%	5842	2359	40%	0.37	2.69

Actual1268409

Note: There is multiple counting for the number of anglers and parties, as most people fished more than one lake.

Average of 3 Anglers per party.

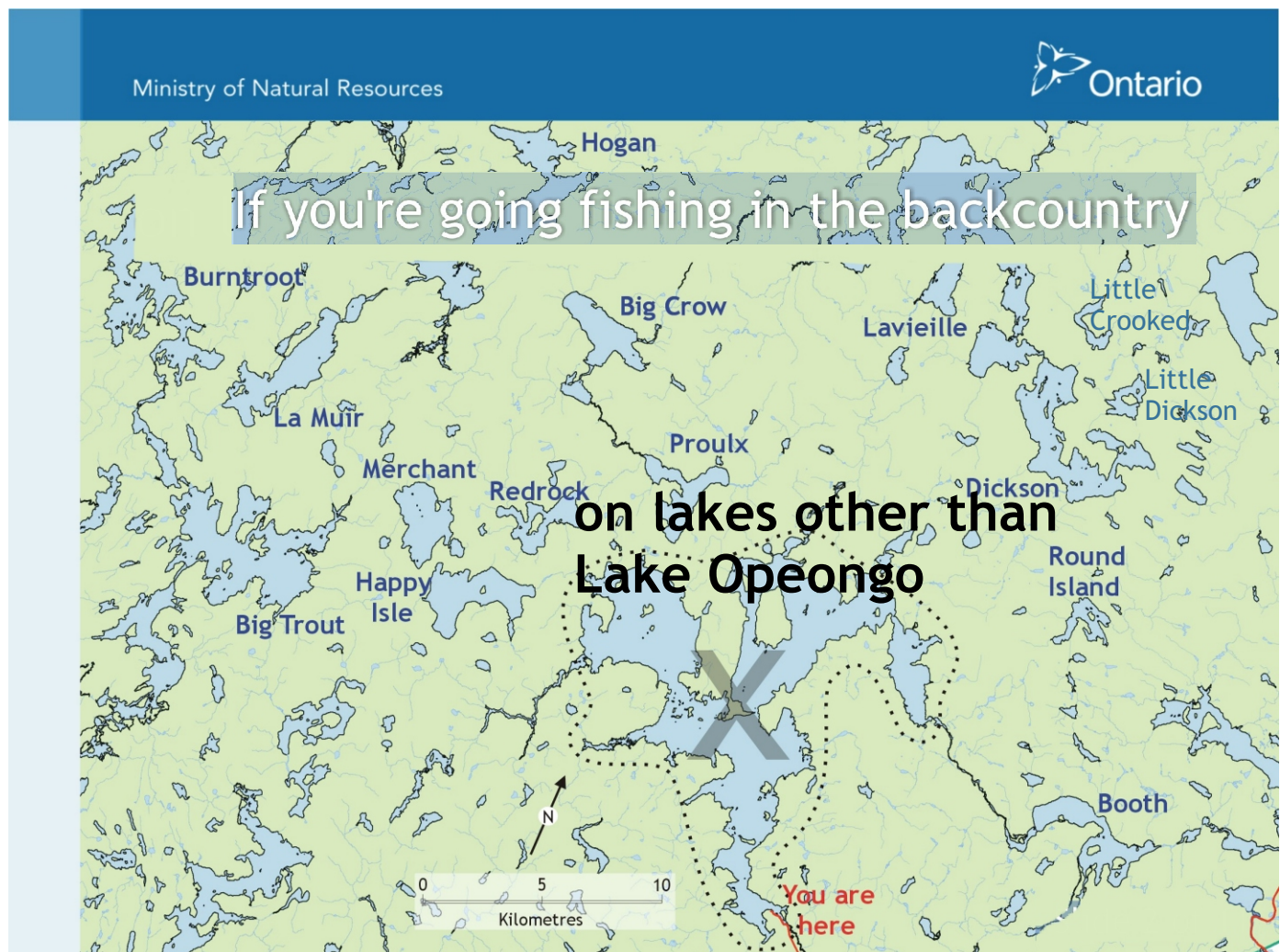
Average of 4.1 reports per party.

The very high release rates for brook trout (63 percent) and lake trout (53 percent) are the single best indicator of just how good the trout fishery remains for most of Algonquin Park. There is a strong correlation between success rate and reported releases, i.e. the better the fishing, the fewer trout reported kept. Once again, we thank everyone who contributed to the survey data set and we look forward to acquiring more valuable trout fishing information to share in the future.

A New Strategy for 2011

The Algonquin Fisheries Assessment Unit will run the trout fishing survey exclusively out of the Lake Opeongo access point office in 2011. This will end the difficulties and inconsistencies of conducting the survey from other Park offices. In recent years, costly lures and prizes have done little to increase participation in our survey, so there will be no 'up front' incentives in 2011, but read on to see what you might win.

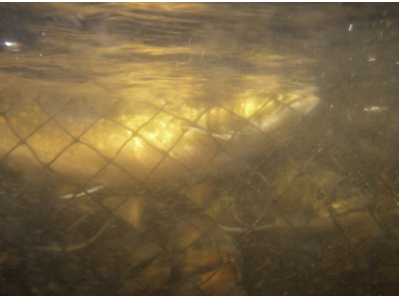
Everyone who registers to camp in the backcountry (other than on Lake Opeongo) and who plans to fish for trout, will be asked to participate in the survey. As they have since 1936, staff from the Harkness Laboratory of Fisheries Research will collect sport fishing information for Lake Opeongo proper. We encourage anglers on that lake to cooperate fully with Harkness Lab staff, as they offer both fish cleaning services and the most up-to-date trout fishing information.



Of particular concern to the AFAU will be tag returns from Dickson Lake. For the first time since 2007, in the fall of 2010 we tagged spawning brook trout, and those 200+ fish comprise our 'marked' pool. Every tag report, as well as reports of untagged brook trout, is essential for us to approximate the population of adult brook trout. Since 60 or more nesting double-crested cormorants have taken up annual residence on Dickson Lake, they have likely affected the sport fishery. A good population estimate of brook trout will be vital to measuring that effect.

A Natural Spectacle

From late October through mid November each year, AFAU staff visit the main spawning area of Dickson Lake at least three times in order to tag brook trout. Without harming the fish, we make one haul each day of a 50 metre long, 2 metre high seine net. This typically encloses 100 trout or more that range up to 1.4 kilograms (3 pounds) in weight. We measure, tag and release these fish for the marking component of our Dickson Lake brook trout population estimates.



An Exciting New Grand Prize

When you return your completed trout fishing survey form, it is entered into a draw for one of three grand prizes; a once-in-a-lifetime trip for one member of your party to Dickson Lake in 2011.



The draw will be made on October 11, 2011 from all surveys returned to that date.

Please note: The prize includes one night's accommodations in Whitney (6 km east of our office) travel from the Algonquin FAU office at the East Gate of Algonquin Park to the sampling site on Dickson Lake and return. A hike of about 1 km and a 15 minute boat ride are part of the journey. We normally leave the office at 9:00 a.m. and return by 5:00 p.m. Each participant will be provided with a personal flotation device (PFD) or survival suit and lunch.